

The SALISBURY

4 Bedrooms | 3.5 Baths | 2-Car Garage

THE TOWN OF
WHITEHALL
DELAWARE



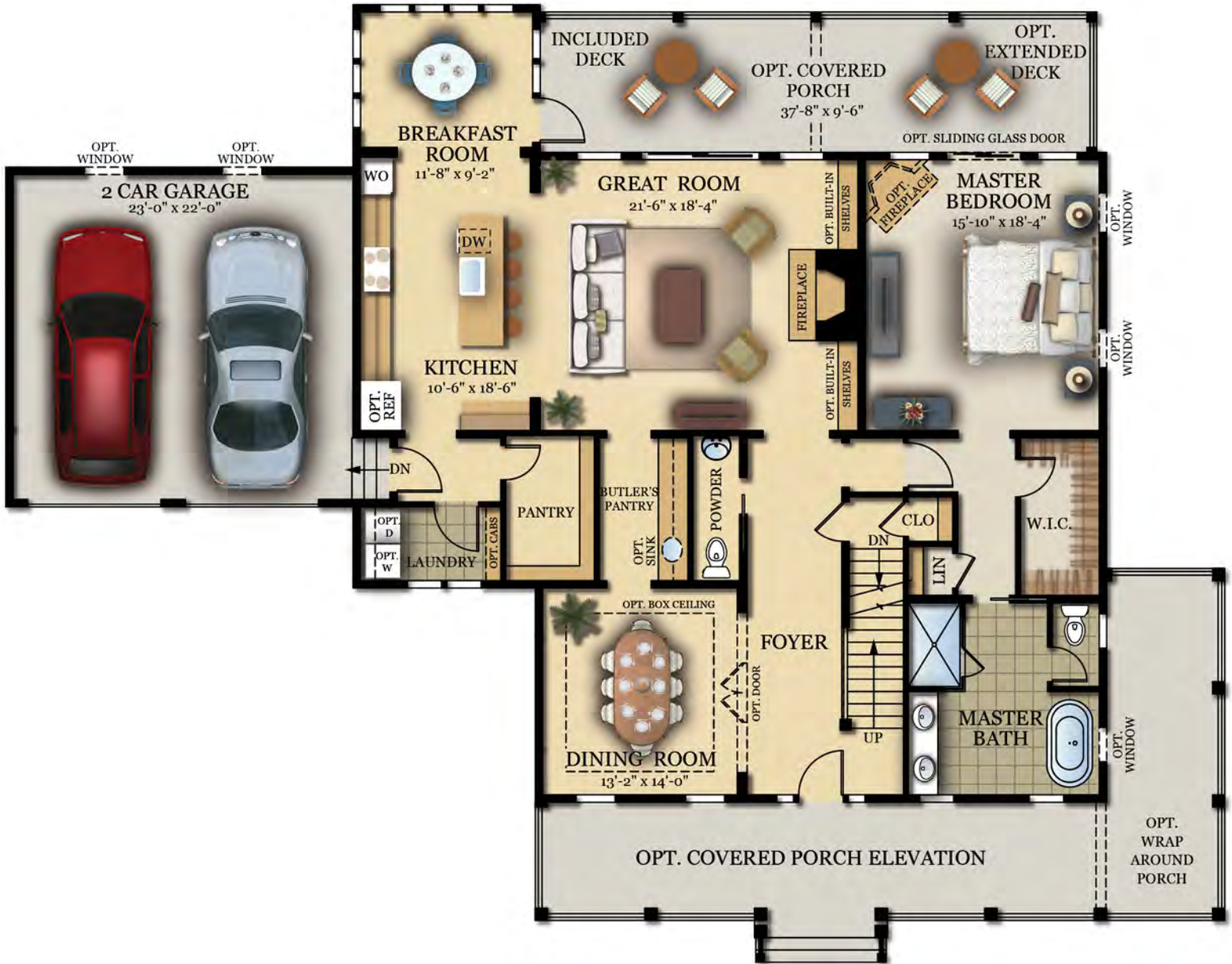
The Salisbury offers a welcoming exterior and an even more comfortable interior perfect for entertaining. With an optional eight-foot-deep front porch and attached two-car garage, this floorplan invites you in with soaring 10' ceilings, a large foyer, a bright great room, and gourmet kitchen open to a breakfast nook, a spacious first floor owner's suite and large walk-in-closet.


MONTCHANIN
BUILDERS

MontchaninBuilders.net | 302.376.1100

The SALISBURY

4 Bedrooms | 3.5 Baths | 2-Car Garage



Main Living Level



Optional Bedroom and Full Bath in lieu of Dining Room



Bedroom Level



Optional Finished Basement Level



Renderings and floorplans are for illustrative purposes. Details and materials are subject to change without notice. Standard and optional features may vary. See Sales Manager for more information. 1/17