

Manor Townhomes

3 Bedrooms | 2.5 Baths | 2-Car Garage



These beautifully designed townhomes include up to 2,500 square feet of finished living space, featuring three bedrooms, two and one-half baths, with gourmet kitchens, 9' ceilings throughout, composite deck and a 2-car garage. Personalize these unique townhomes with your choice of cabinets, countertops, flooring and more!

**MONTCHANIN
BUILDERS**

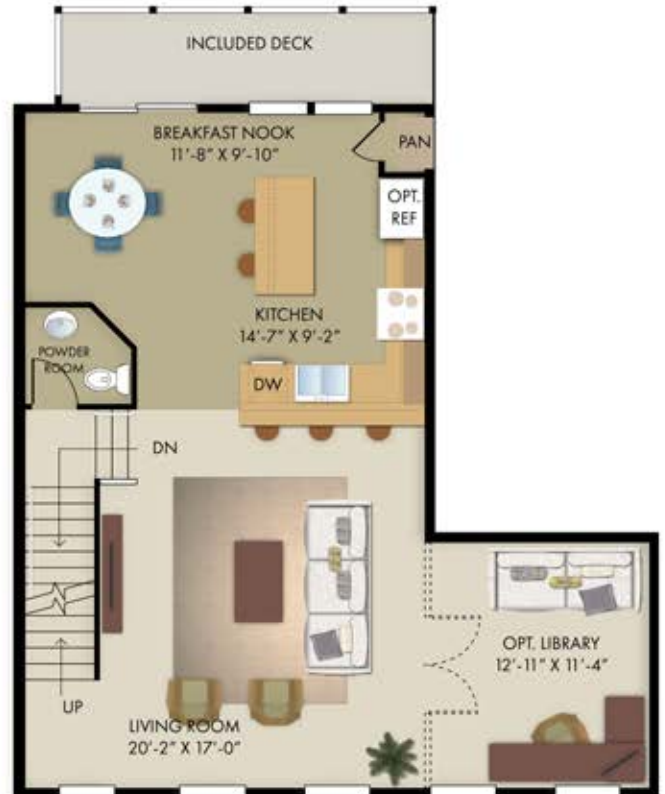
MontchaninBuilders.net | 302.655.2600

The Montgomery

Entry Level



Main Level



Bedroom Level



Opt. Luxury Master Bathroom

